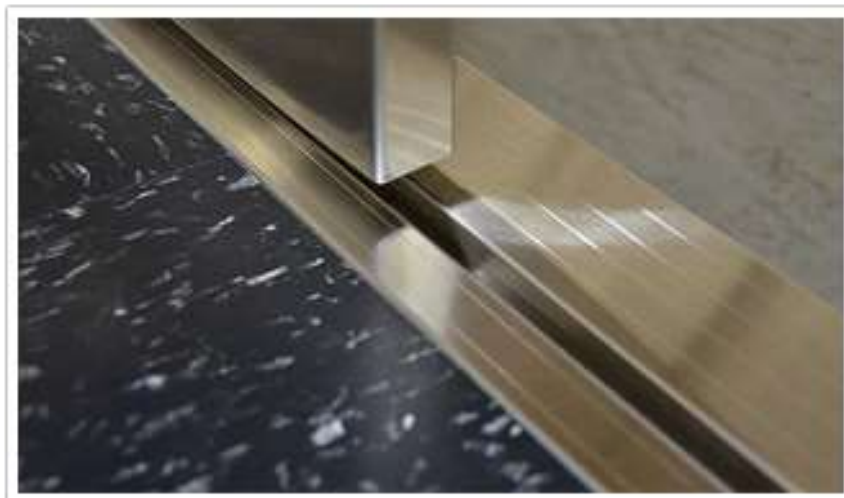




Specification Guide  
to  
Owners, Architect's and Consultant's

---

SILLSKINS®  
Elevator Sill Overlay



# Table of Contents

- SILLSKIN® Elevator Sill Finish Solution ..... 3
  - Products: ..... 3
  - APPLICATION ..... 3
  - Benefits ..... 3
- Construction Specifications Institute (CSI) - Division 14 Revisions ..... 4
- Owner Requirements..... 6
- Proposal for Installation of SILLSKIN® Modernization Overlay ... **Error! Bookmark not defined.**
- MATERIAL ORDER FORM..... 7

## SILLSKIN® Elevator Sill Finish Solution

SILLSKIN® by Archi-Tread®, Inc. is a revolutionary elevator sill cladding for building owners who value durable premium finishes and their budget. SILLSKIN® cladding process provides owners an alternative to the expensive and time consuming method of removing and replacing existing sills. Within hours a new SILLSKIN® Cladding product can be installed. Most commonly requested finishes include: Stainless Steel and Bronze. Additional Options include: Extended Seamless Apron; Heavy Duty High Traffic cladding; and custom finishes. Installation of SILLSKIN® Cladding is performed by Archi-Tread®, Inc. authorized and trained technicians.

### Products:

**SILLSKIN® Modernization Cladding** overlays onto the existing hoistway elevator sill providing the owner with a new premium finish. Typical installations are completed within hours by an Archi-Tread, Inc. authorized and trained technicians.

**SILLSKIN® Construction Cladding** is the solution to ensure elevator sill finishes are in pristine condition at turn-over. Extruded aluminum base sills provided by Archi-Tread®, Inc. are installed by the elevator contractor during the elevator installation phase. Once the heavy building construction is completed an Archi-Tread®, Inc. authorized and trained technician will field apply the SILLSKIN® cladding.

**SILLSKIN® Sill** provides a low cost option to full stock premium finish sills. SILLSKIN® Sills are designed to match any OEM or independent's sill profiles. Factory fabricated with an extruded aluminum base and SILLSKIN® cladding in the finish of choice. (Available in Stainless Steel, Bronze, and a variety of custom finishes and alloys) SILLSKIN® Sills are shipped to and installed by the elevator contractor.

### APPLICATION

- Modernization
- Finish Upgrades
- Adding to or raising existing floors
- Construction
- Damaged sill

### Benefits

- Lowest Cost Premium Finish Sill Available
- Match SILLSKIN® finish to hoistway frame or cab finish
- Custom finishes and alloys available
- Fast Delivery
- SILLSKIN® Modernization Cladding:
  - No disruption or damage to existing flooring or frame
  - Seamless integration with existing door assembly
  - Reduced installation time (from 2 days to a few hours)

## Construction Specifications Institute (CSI) - Division 14 Revisions

### Division 14200 Conveying System elevator sill revision to include SILLSKIN® products.

*NOTE: When developing specifications to include SILLSKIN the specifier should clarify designated landings/car requiring SILLSKIN® products. All other landing sills requiring aluminum finishes should be provided by the Original Equipment Manufacturer or other independent supplier of sill products.*

### QUALITY ASSURANCE

Installer: SILLSKIN® Cladding shall be installed by Archi-Tread®, Inc. authorized and trained technicians.

### PART 1 - SUBMITTALS

Product Data: Submit manufacturer's product data for each system proposed for use. Include the following: ADD: Hoistway Entrance sills and Car sill details.

### PART 2 - HOISTWAY ENTRANCES:

#### Sills:

- a. Sills shall be extruded aluminum at levels <insert floor designations>.
- b. Premium finish sills shall be Archi-Tread Inc. <#4 Stainless Steel; #4 Bronze; Insert custom finish listed on [www.archi-tread.com](http://www.archi-tread.com) > at levels <insert floor designations>.
- c. Options to be provided include:
  - i. Extended Apron; Heavy Duty cladding
  - ii. SILLSKIN® Modernization Cladding><SILLSKIN® Construction Cladding><SILLSKIN® Sill>

### PART 2 - CAR ENTRANCES:

#### Sills:

- a. Sills shall be extruded aluminum on car(s) <insert car designation(s)>.
- b. Premium finish sills shall be Archi-Tread Inc. <#4 Stainless Steel; #4 Bronze; Insert custom finish listed on [www.archi-tread.com](http://www.archi-tread.com) > on car(s) <insert car designations>.
- c. Options to be provided include:
  - i. Heavy Duty cladding
  - ii. SILLSKIN® Modernization Cladding><SILLSKIN® Construction Cladding><SILLSKIN® Sill>

### PART 3 – EXECUTION:

Installation: *Insert installation description for applicable SILLSKIN® product.*

SILLSKIN® Modernization Cladding shall be performed by Archi-Tread®, Inc. authorized and trained technicians

SILLSKIN® Construction Cladding is a two part process. Part one requires the elevator contractor to install the aluminum sill. Part two requires an Archi-Tread®, Inc. authorized and trained technician to apply finished cladding. Elevator contractor shall request, 15 working days in advance, Archi-Tread, Inc. to begin cladding installation.

SILLSKIN® Sill shall be installed by elevator contractor.

**NOTE:** The following includes typical sections related to the Division 14 elevator specifications. I believe the Division 14200 sections are sufficient and Section 01500 and 05500 could be omitted from the SILLSKIN revision.

**Related work not specified herein:** The following sections contain requirements that relate to this section and are performed by trades other than the elevator manufacturer/installer.

1. **Section 01500 - Construction Facilities and Temporary Controls:** protection of floor openings and personnel barriers; temporary power and lighting.
2. **Section 05500 - Metal Fabrications:** pit ladder, divider beams, support for entrances and rails, hoisting beam at top of hoistway.

## Owner Requirements

### **Job Site Requirements for Owner or Prime Contractor:**

Security: provide all necessary security access forms along with purchase order.

Parking: provide parking for a minimum of one full size van/truck.

Work Space: coordinate with Archi-Tread®, Inc. representative to establish working area.

Smoke Detectors: it is recommended to cover lobby smoke detectors during installation. Owner shall verify and request permit if required by authorities. ( i.e. Burn Permits)

Pit: must be clean and dry prior to start of installation. (applies only if work is to be performed from Pit area)

Pit Ladder: fixed ladders in each pit as required by governing code, size of pocket and location shown per Otis layout.

Outlet: Provide 20 Amp electric outlet.

Elevator: elevator contractor shall coordinate with Archi-Tread®, Inc. installer for positioning of elevator.

**BARRICADES MUST MEET OSHA MINIMUM REQUIREMENTS**



LIST EXISTING MATERIAL

Example:

<b>Floor # / Car #</b>	<b>QTY</b>	<b>Model</b>	<b>Finish</b>	<b>Gauge</b>	<b>A</b>	<b>B</b>	<b>C</b>	<b>D</b>	<b>O.W (A+B+C)</b>	<b>Length</b>
Car 1-2	2	New	#4 Bronze	ST	1"	1/2"	4"	9/16"	5 1/2"	68"
Fl: L	1	Mod	#4 Bronze	ST	1"	1/2"	4"	9/16"	5 1/2"	68"
Fl: B2, B1, 1- 10	1	Mod	#4 Stainless Steel	ST	1"	1/2"	4"	9/16"	5 1/2"	68"